



HEAT-SHEET®
HEAVY

UNDER-SLAB RADON MITIGATION INSULATION LAYER

Installation Guide 2nd Edition



Heat-Sheet.com



DISCLAIMER

Reference to “Logix Brands Ltd.”, “Logix Insulated Concrete Forms”, and/or “Logix” means the manufacturer (the “Manufacturer”) selling the product(s) (the “Products”) referenced in the Product Specific Table and Accessories section of and detailed within the installation guides throughout this manual (the “Manual”) to consumers (the “User”). The Manufacturer sells its Products “as is” and the contents of the Manual are provided “as is”.

NO EXPRESS WARRANTIES ARE GIVEN. ALL WARRANTIES, EXPRESS, STATUTORY AND IMPLIED, INCLUDING BUT NOT LIMITED TO, WARRANTIES OF MERCHANTABILITY AND FITNESS FOR A PARTICULAR PURPOSE, ARE EXPRESSLY DISCLAIMED.

The User assumes all risks as to the use of the Products and/or the Manual. The Manual is to be used as a reference guide only. The User shall confirm the information contained in the Manual meets local building codes and construction practices by consulting with local building officials and professionals, and determine if there are any additional building and/or construction requirements. Before use, the User should fully investigate the Products to enable informed choices as to suitability for a particular construction project and proper design and implementation. It is the User’s responsibility and obligation to ensure all work performed conforms to applicable building code and labour safety regulations governing the construction.

As the Manufacturer has no control over installation design and workmanship, accessory materials or application conditions, the Manufacturer does not warranty the performance or results of any installation containing the Products and/or derived from the Manual. The User acknowledges that it has not relied upon any representation, condition or warranty made by the Manufacturer or any other person on the Manufacturer’s behalf.

The Manufacturer assumes no responsibility that its Products will be fit for any particular purpose. The Manufacturer will not be liable for any direct, incidental, consequently or indirect damages (including lost profits) arising out of the use of its Products and/or the Manual.

The Manufacturer reserves the right to make changes to the Manual without notice and assumes no liability in connection with the use of the Manual.



TABLE OF CONTENTS

1.0 - INTRODUCTION 4

2.0 - PRODUCT DESCRIPTION 4

3.0 - BENEFITS 4

4.0 - INSTALLATION AND DETAILING 4

4.1 RESIDENTIAL 5

 4.1.1 PERIMETER SEALING WITH SUBTERRA® PROTECTION BOARD 6

 4.1.2 PENETRATION SEALING WITH SUBTERRA® PROTECTION BOARD 7

 4.1.3 PERIMETER SEALING WITH SOIL GAS BARRIER MEMBRANE 8

 4.1.4 PENETRATION SEALING WITH SOIL GAS BARRIER MEMBRANE 9

 4.1.5 PERIMETER SEALING WITH SOIL GAS BARRIER MEMBRANE & RADIANT FLOOR TUBING 10

 4.1.6 PENETRATION SEALING WITH SOIL GAS BARRIER MEMBRANE & RADIANT FLOOR TUBING 11

 4.1.7 PERIMETER SEALING WITH SOIL GAS BARRIER MEMBRANE & HEAT-SHEET® HD SERIES 12

 4.1.8 PENETRATION SEALING WITH SOIL GAS BARRIER MEMBRANE & HEAT-SHEET® HD SERIES 13

4.2 COMMERCIAL 14

 4.2.1 PENETRATION SEALING WITH SUBTERRA® PROTECTION BOARD 15

 4.2.2 PENETRATION SEALING WITH SOIL GAS BARRIER MEMBRANE 16

 4.2.3 SEALING WITH SUBTERRA® PROTECTION BOARD AT INTERIOR THICKENED SLAB 17

 4.2.4 SEALING WITH SOIL GAS BARRIER MEMBRANE AT INTERIOR THICKENED SLAB 18

 4.2.5 SEALING WITH SUBTERRA® PROTECTION BOARD AT PILE LOCATION 19

 4.2.6 SEALING WITH SOIL GAS MEMBRANE AT PILE LOCATION 20



1.0 - INTRODUCTION

Used for under-slab applications, when installed with the “nodules down”, the interconnected channels created by the Heat-Sheet® Heavy nodules allow soil gas movement between the ground and the soil gas barrier system, required as part of the radon depressurization system.

2.0 - PRODUCT DESCRIPTION

Made with high density expanded polystyrene (EPS), Heat-Sheet Heavy are manufactured in 2ft x 4ft panels with interlocking edges, and protruding nodules.

3.0 - BENEFITS

Heat-Sheet Heavy is designed to support the weight of cast-in-place concrete, and foot traffic during construction.

Available in a variety of thicknesses to satisfy a range of insulation values. Refer to the Heat-Sheet Heavy Material Property Data Sheets for more information.

When installed under slabs with the nodules facing down, a network of voids are created that allow the unimpeded flow of radon towards the outlet system, depressurizing radon gas buildup under the slab. As a result, Heat-Sheet Heavy replaces the granular fill that is typically required as the gas permeable layer under slabs providing 50 percent more air flow.¹

4.0 - INSTALLATION AND DETAILING

An approved soil gas barrier is required over Heat-Sheet Heavy to prevent radon gas ingress into the living space. This soil gas barrier layer is typically a minimum 6 mil polyethylene or an approved peel-and-stick membrane.

However, a layer of 1/2” Halo® Subterra® Protection Board³ is more than 7 times radon resistant than 6 mil polyethylene membranes², and is more durable and easier to install than typical soil gas barrier products. In addition, Subterra provides an extra layer of continuous insulation.

This section provides typical Heat-Sheet Heavy installation instructions for residential and commercial applications where Heat-Sheet Heavy provides both continuous insulation and sub-slab ventilation for radon mitigation.

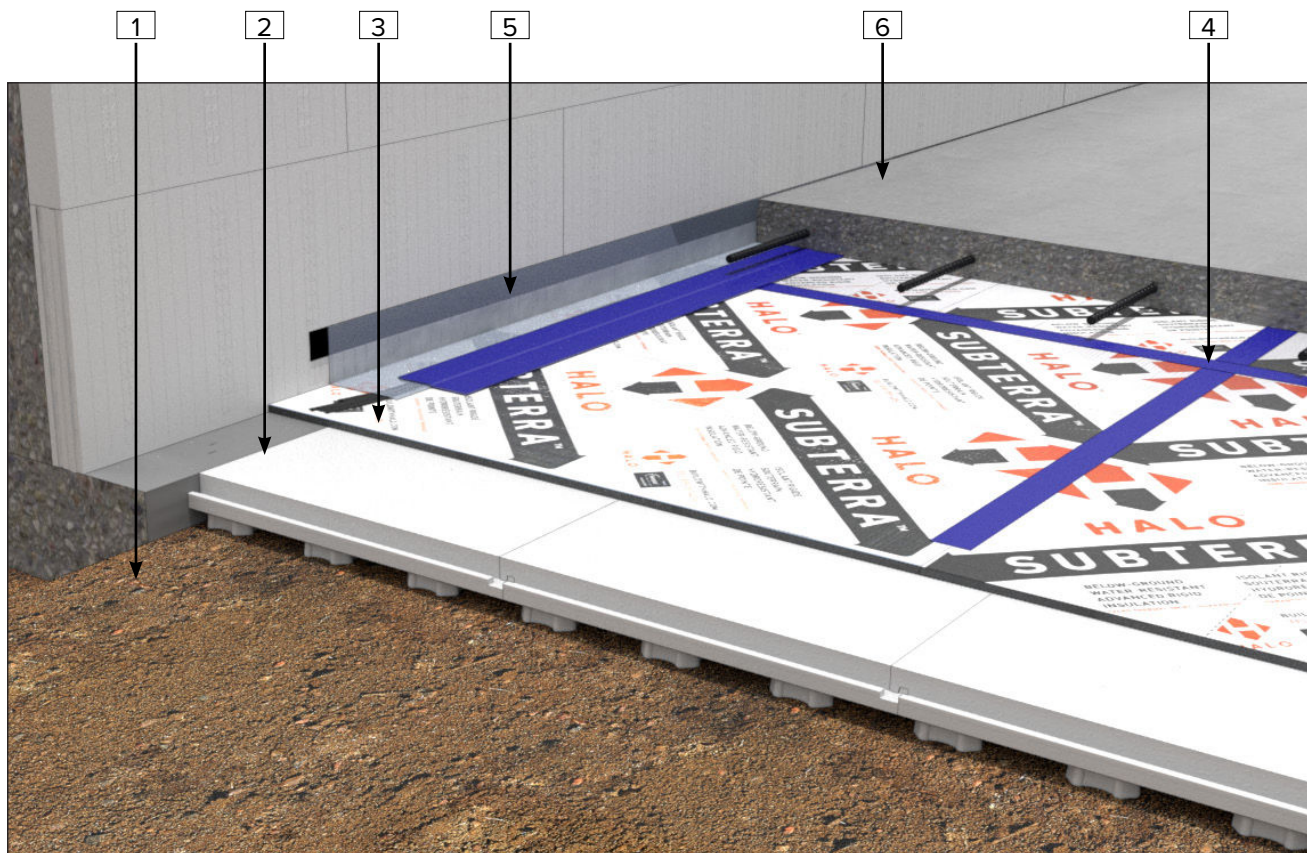
1. Based on independent testing by the National Research Council of Canada (NRC), “Radon Infiltration Building Envelope Test Systems” (RIBETS)
2. Based on independent testing by the National Research Council of Canada (NRC), “Comparative Test of Subterra Protection Board with Tuck Tape and 6 mil Polyethylene Membrane for Radon Prevention”
3. Halo Subterra Protection Board is regionally available and is currently only manufactured by Beaver Plastics Ltd. and AMC Foam Technologies Inc.



4.1 RESIDENTIAL



4.1.1 PERIMETER SEALING WITH SUBTERRA® PROTECTION BOARD



- 1 Level and compact the base material, as required. Heat-Sheet Heavy can be placed directly on undisturbed soil, compacted fill or sand.
- 2 Install Heat-Sheet Heavy on the base material. Heat-Sheet Heavy acts as the sub-slab ventilation layer, so no additional gas permeable layer, such as granular fill, is required.

Since joints between Heat-Sheet Heavy panels interlock, taping joints is not required.
- 3 Install a minimum 1/2" layer of Subterra Protection Board directly on top of Heat-Sheet Heavy to act as the gas impermeable layer. Subterra should cover the entire slab area.

Prior to placing Subterra, inspect the condition of the Heat-Sheet Heavy panels, and repair or replace damaged panels.

Butt all joints tightly and against the foundation wall, grade beam or slab.
- 4 Seal all Subterra board joints with low permeance sheathing tape. Foam fill between joints with gaps 1/4" or more before tape sealing.

- 5 Provide a strip of soil gas barrier membrane along the perimeter. The strip should extend up to the depth of the concrete slab and minimum 6" over Subterra.

Seal and secure the soil gas barrier membrane to the foundation wall, grade beam or slab with butyl tape.

Seal and secure the soil gas barrier to the Subterra boards with acoustic sealant.

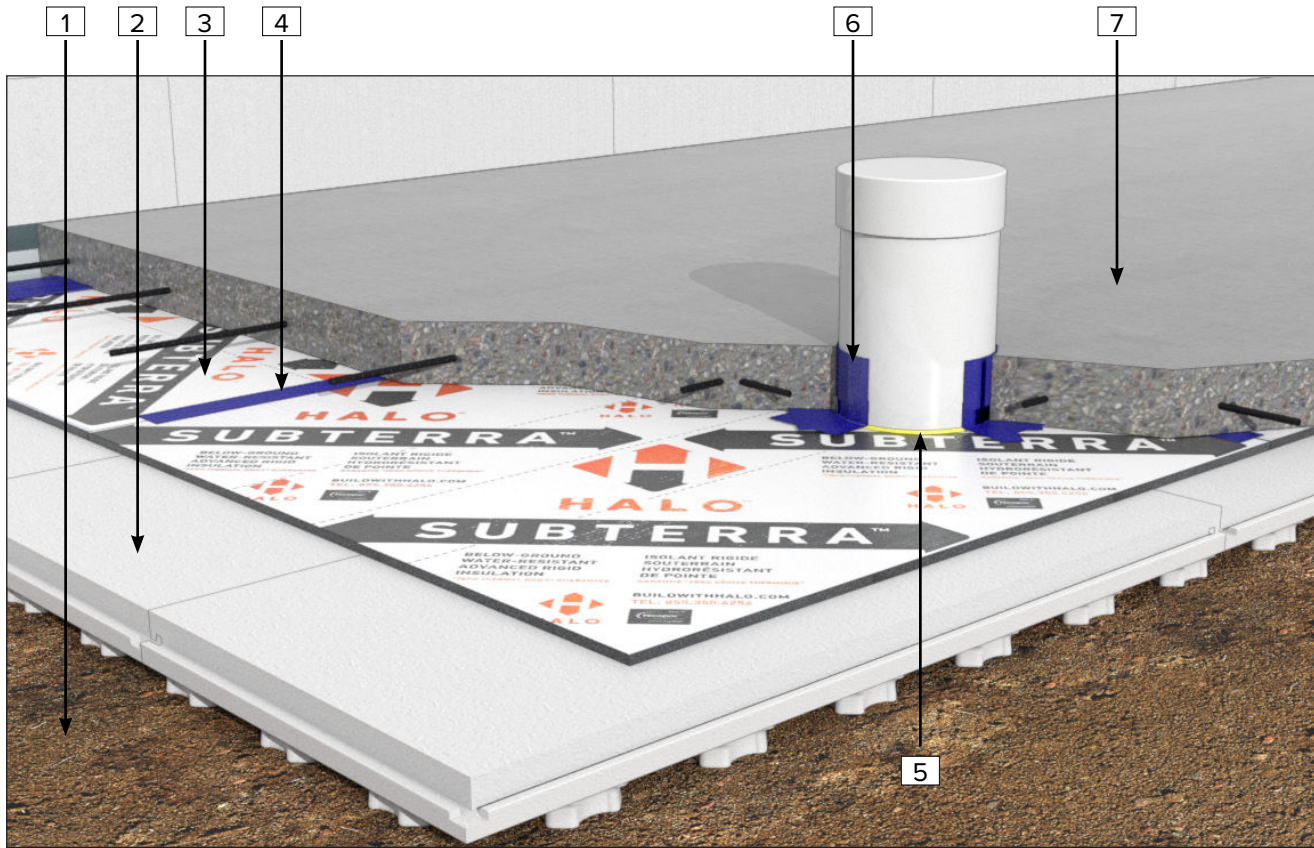
Unless a peel-and-stick membrane is used, use low permeance sheathing tape to secure the soil gas barrier membrane to Subterra.
- 6 Pour the slab. Prior to concrete placement, inspect the condition of the Subterra boards including all sealed joints and penetrations, and repair or replace damages sections.

NOTE: For detailed installation of Subterra Protection Boards and alternate sealing methods, refer to the Halo Subterra Protection Board install guide.

RESIDENTIAL



4.1.2 PENETRATION SEALING WITH SUBTERRA® PROTECTION BOARD



1 Level and compact the base material, as required. Heat-Sheet Heavy can be placed directly on undisturbed soil, compacted fill or sand.

2 Install Heat-Sheet Heavy on the base material. Heat-Sheet Heavy acts as the sub-slab ventilation layer, so no additional gas permeable layer, such as granular fill, is required.

Since joints between Heat-Sheet Heavy panels interlock, taping joints is not required.

Cut a circular hole with a hole saw or utility knife to accommodate the radon exhaust pipe.

Apply spray foam between Heat-Sheet Heavy and the exhaust pipe for gaps 1/4" or greater.

3 Install a minimum 1/2" layer of Subterra Protection Board on top of Heat-Sheet Heavy to act as the gas impermeable layer. Subterra should cover the entire slab area.

Prior to placing Subterra, inspect the condition of the Heat-Sheet Heavy panels, and repair or replace damaged panels.

Butt all joints tightly and against the foundation wall, grade beam or slab area.

Cut a circular hole to accommodate the exhaust pipe with a utility knife.

4 Seal all Subterra board joints with low permeance sheathing tape. Foam fill between joints with gaps 1/4" or more before tape sealing.

5 Apply spray foam between Subterra and the exhaust pipe for gaps 1/4" or greater.

6 Apply low permeance sheathing tape, or a mastic sealant, to seal between the Subterra boards and the exhaust pipe.

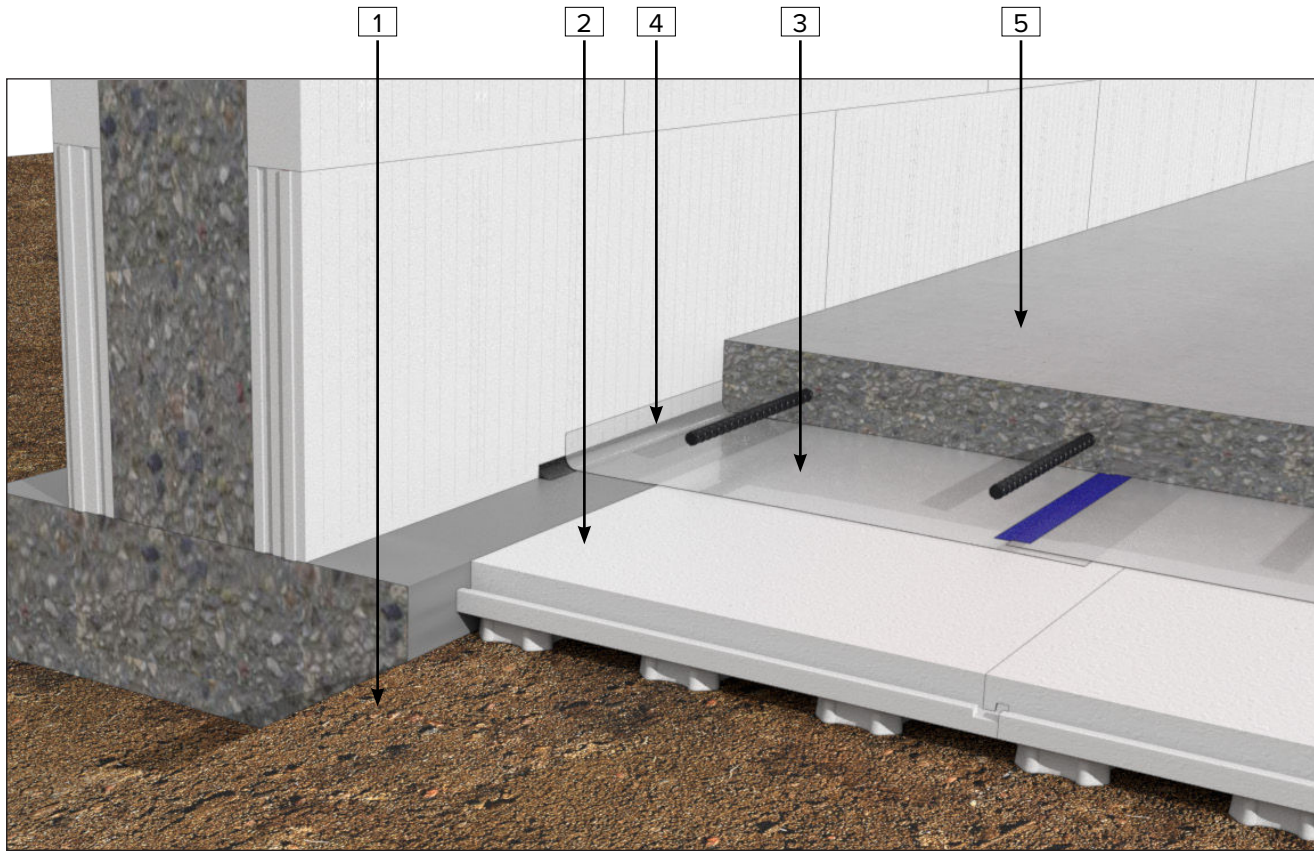
7 Pour the slab. Prior to concrete placement, inspect the condition of the Subterra boards including all sealed joints and penetrations, and repair or replace damages sections.

NOTE: For detailed installation of Subterra Protection Boards and alternate sealing methods, refer to the Halo Subterra Protection Board install guide.

RESIDENTIAL



4.1.3 PERIMETER SEALING WITH SOIL GAS BARRIER MEMBRANE



- 1 Level and compact the base material, as required. Heat-Sheet Heavy can be installed directly on undisturbed soil, compacted fill or sand.
- 2 Install Heat-Sheet Heavy on the base material. Heat-Sheet Heavy acts as the sub-slab ventilation layer, so no additional gas permeable layer, such as granular fill, is required.

Since joints between Heat-Sheet Heavy panels interlock, taping joints is not required.

- 3 Install a soil gas barrier layer on top of Heat-Sheet Heavy, such as 6 mil polyethylene sheets or a peel-and-stick membrane. The soil gas barrier membrane will act as the gas impermeable layer, so it should cover the entire slab area and extend up against the foundation wall just below the depth of slab.

Prior to placing a soil gas barrier membrane, inspect the condition of the Heat-Sheet Heavy panels, and repair or replace damaged panels.

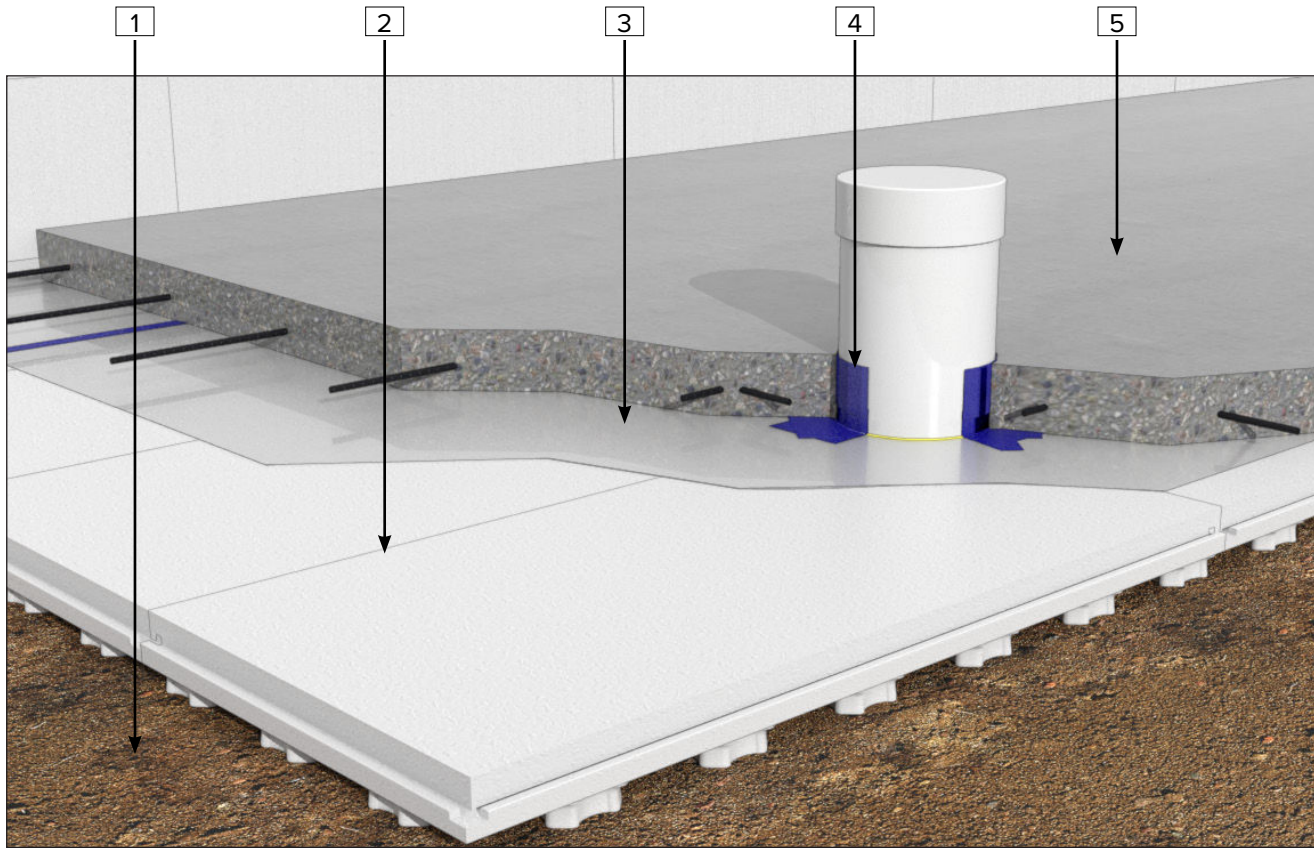
Provide a minimum 12" lap joint, or as required by local codes or by design. When using 6 mil polyethylene sheets, seal and secure lap joints with low permeance sheathing tape.

- 4 Seal the perimeter with acoustic sealant between the soil gas barrier membrane and the foundation wall, grade beam or slab.
- 5 Pour the slab. Prior to concrete placement, inspect the condition of the Heat-Sheet Heavy panels and soil gas barrier including all sealed joints and penetrations, and repair or replace damages sections.

RESIDENTIAL



4.1.4 PENETRATION SEALING WITH SOIL GAS BARRIER MEMBRANE



1 Level and compact the base material, as required. Heat-Sheet Heavy can be installed directly on undisturbed soil, compacted fill or sand.

2 Install Heat-Sheet Heavy on the base material. Heat-Sheet Heavy acts as the sub-slab ventilation layer, so no additional gas permeable layer, such as granular fill, is required.

Cut a circular hole with a hole saw or utility knife to accommodate the radon exhaust pipe.

Apply spray foam between Heat-Sheet Heavy and the exhaust pipe for gaps 1/4" or greater.

3 Install a soil gas barrier layer on top of Heat-Sheet Heavy, such as 6 mil polyethylene sheets or a peel-and-stick membrane. The soil gas barrier membrane will act as the gas impermeable layer, so it should cover the entire slab area and extend up against the foundation wall just below the depth of slab.

Prior to placing a soil gas barrier membrane, inspect the condition of the Heat-Sheet Heavy panels, and repair or replace damages panels.

Provide a minimum 12" lap joint, or as required by local codes or by design. When using 6 mil polyethylene sheets, seal and secure lap joints with low permeance sheathing tape.

Cut a hole to accommodate the exhaust pipe with a utility knife.

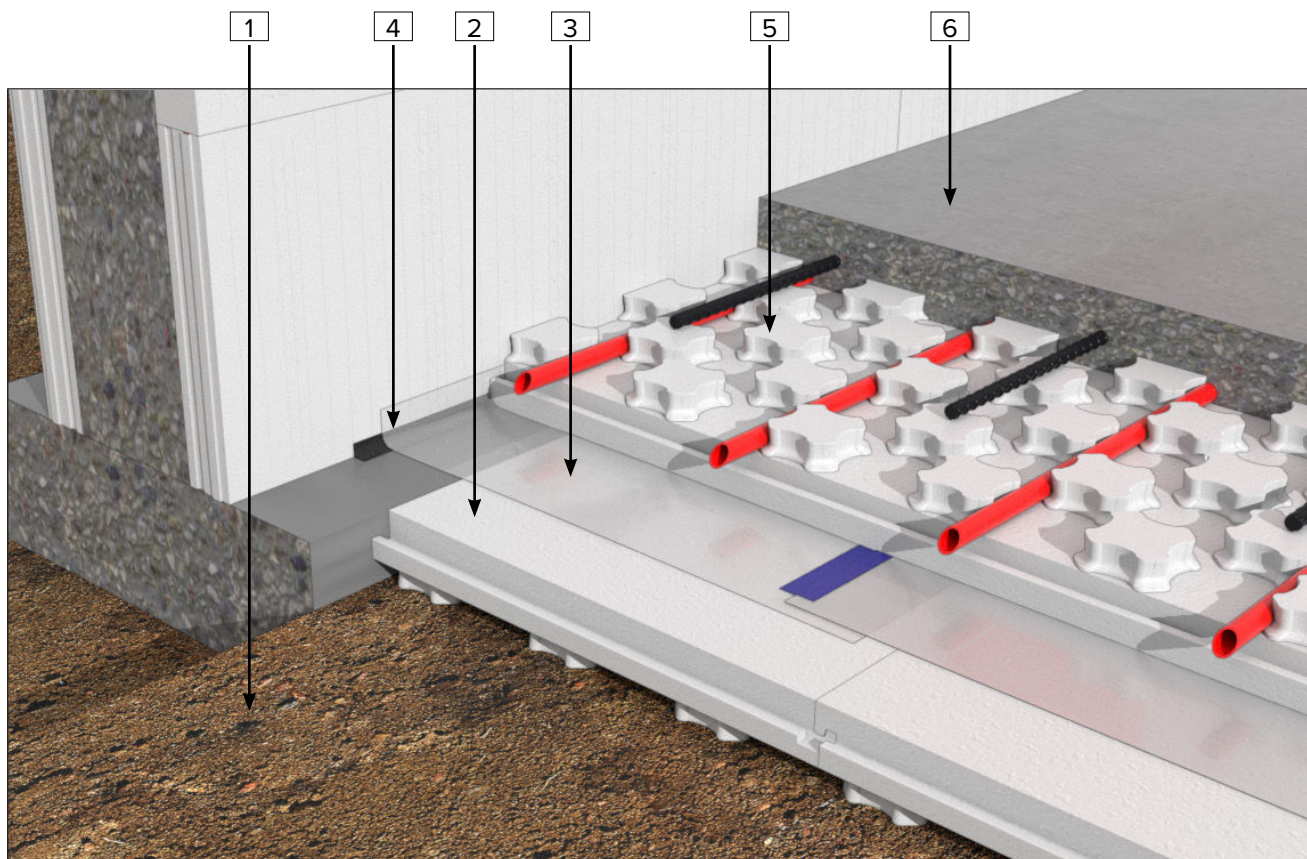
4 Apply low permeance sheathing tape, or a mastic sealant, to seal between the soil gas barrier layer and exhaust pipe.

5 Pour the slab. Prior to concrete placement, inspect the condition of the Heat-Sheet Heavy panels and soil gas barrier including all sealed joints and penetrations, and repair or replace damages sections.

RESIDENTIAL



4.1.5 PERIMETER SEALING WITH SOIL GAS BARRIER MEMBRANE & RADIANT FLOOR TUBING



- 1 Level and compact the base material, as required. Heat-Sheet Heavy can be installed directly on undisturbed soil, compacted fill or sand.
- 2 Install Heat-Sheet Heavy on the base material. Heat-Sheet Heavy acts as the sub-slab ventilation layer, so no additional gas permeable layer, such as granular fill, is required.

Since joints between Heat-Sheet Heavy panels interlock, taping joints is not required.

- 3 Install a soil gas barrier layer on top of Heat-Sheet Heavy, such as 6 mil polyethylene sheets or a peel-and-stick membrane. The soil gas barrier membrane will act as the gas impermeable layer, so it should cover the entire slab area and extend up against the foundation wall just below the depth of slab.

Prior to placing a soil gas barrier membrane, inspect the condition of the Heat-Sheet Heavy panels, and repair or replace damaged panels.

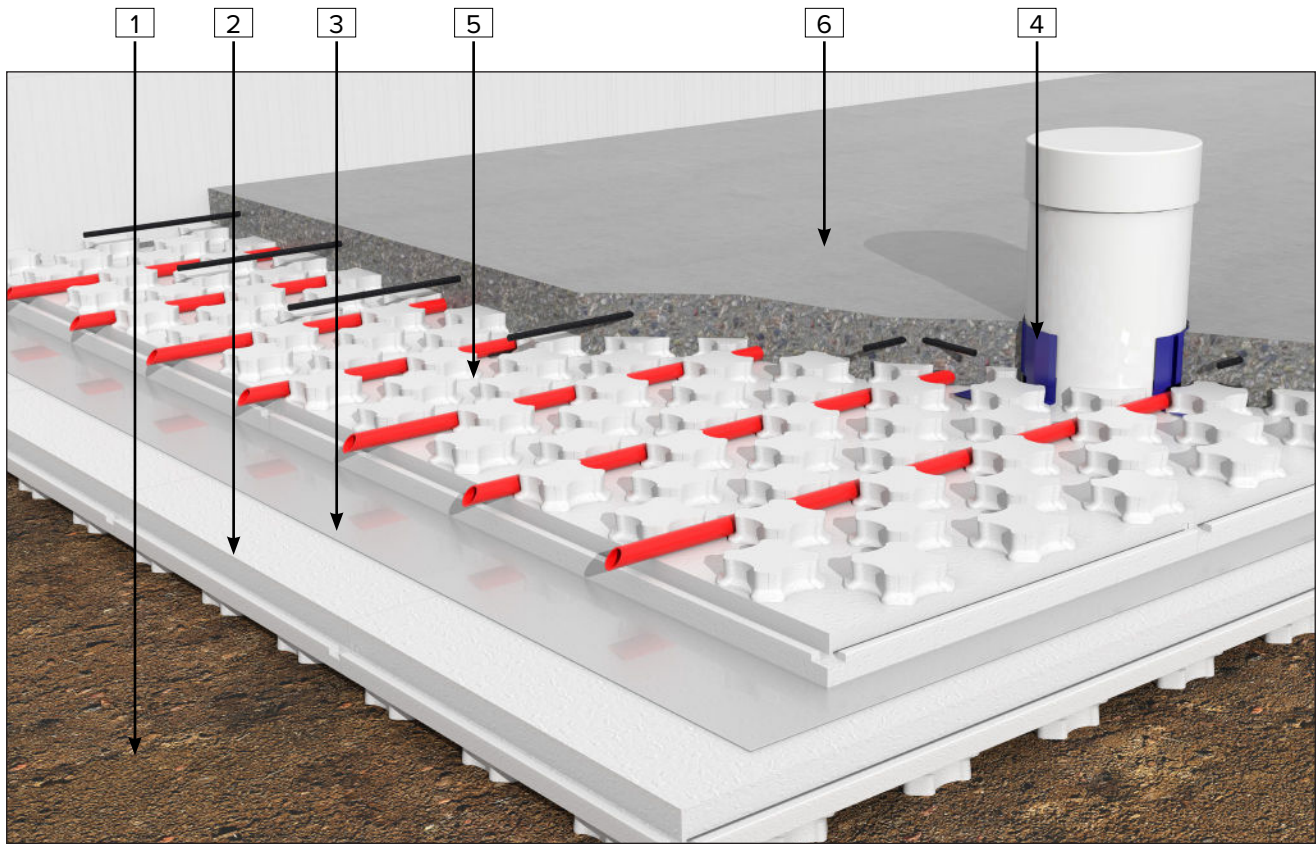
Provide a minimum 12" lap joint, or as required by local codes or by design. When using 6 mil polyethylene sheets, seal and secure lap joints with low permeance sheathing tape.

- 4 Seal the perimeter with acoustic sealant between the soil gas barrier membrane and the foundation wall, grade beam or slab.
- 5 Install Heat-Sheet Heavy radiant floor panels on top of the soil gas barrier membrane. Perimeter sealing of Heat-Sheet Heavy radiant floor panels is not required. For detailed installation instructions refer to the [Heat-Sheet Heavy Installation Guide](#).
- 6 Pour the slab. Prior to concrete placement, inspect the condition of the Heat-Sheet Heavy radiant floor panels, and repair or replace damages sections.

RESIDENTIAL



4.1.6 PENETRATION SEALING WITH SOIL GAS BARRIER MEMBRANE & RADIANT FLOOR TUBING



- 1 Level and compact the base material, as required. Heat-Sheet Heavy can be installed directly on undisturbed soil, compacted fill or sand.
- 2 Install Heat-Sheet Heavy on the base material. Heat-Sheet Heavy acts as the sub-slab ventilation layer, so no additional gas permeable layer, such as granular fill, is required.

Cut a circular hole with a hole saw or utility knife to accommodate the radon exhaust pipe.

Apply spray foam between Heat-Sheet Heavy and the exhaust pipe for gaps 1/4" or greater.
- 3 Install a soil gas barrier layer on top of Heat-Sheet Heavy, such as 6 mil polyethylene sheets or a peel-and-stick membrane. The soil gas barrier membrane will act as the gas impermeable layer, so it should cover the entire slab area and extend up against the foundation wall just below the depth of slab.

Prior to placing a soil gas barrier membrane, inspect the condition of the Heat-Sheet Heavy panels, and repair or replace damages panels.

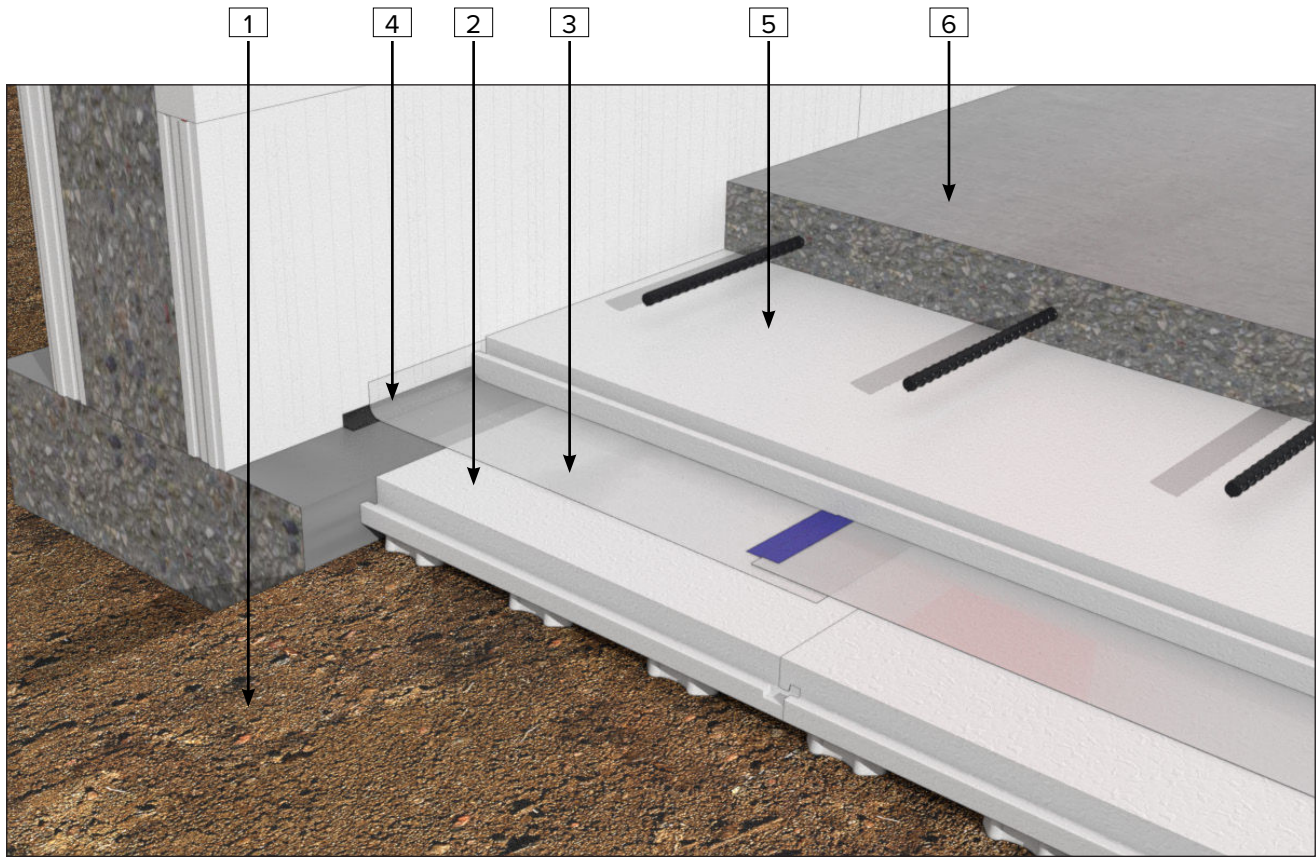
- Provide a minimum 12" lap joint, or as required by local codes or by design. When using 6 mil polyethylene sheets, seal and secure lap joints with low permeance sheathing tape.
- 4 Apply low permeance sheathing tape, or a mastic sealant, to seal between the soil gas barrier layer and exhaust pipe.

Cut a hole to accommodate the exhaust pipe with a utility knife.
- 5 Install Heat-Sheet Heavy radiant floor panels on top of the soil gas barrier membrane. Sealing penetrations around Heat-Sheet Heavy radiant floor panels are not required. For detailed installation instructions refer to the [Heat-Sheet Heavy Installation Guide](#).
- 6 Pour the slab. Prior to concrete placement, inspect the condition of the Heat-Sheet Heavy floor panels including all sealed penetrations, and repair or replace damages sections.

RESIDENTIAL



4.1.7 PERIMETER SEALING WITH SOIL GAS BARRIER MEMBRANE & HEAT-SHEET® HD SERIES



1 Level and compact the base material, as required. Heat-Sheet Heavy can be installed directly on undisturbed soil, compacted fill or sand.

2 Install Heat-Sheet Heavy on the base material. Heat-Sheet Heavy acts as the sub-slab ventilation layer, so no additional gas permeable layer, such as granular fill, is required.

Since joints between Heat-Sheet Heavy panels interlock, taping joints is not required.

3 Install a soil gas barrier layer on top of Heat-Sheet Heavy, such as 6 mil polyethylene sheets or a peel-and-stick membrane. The soil gas barrier membrane will act as the gas impermeable layer, so it should cover the entire slab area and extend up against the foundation wall just below the depth of slab.

Prior to placing a soil gas barrier membrane, inspect the condition of the Heat-Sheet Heavy panels, and repair or replace damaged panels.

Provide a minimum 12" lap joint, or as required by local codes or by design. When using 6 mil polyethylene sheets, seal and secure lap joints with low permeance sheathing tape.

4 Seal the perimeter with acoustic sealant between the soil gas barrier membrane and the foundation wall, grade beam or slab.

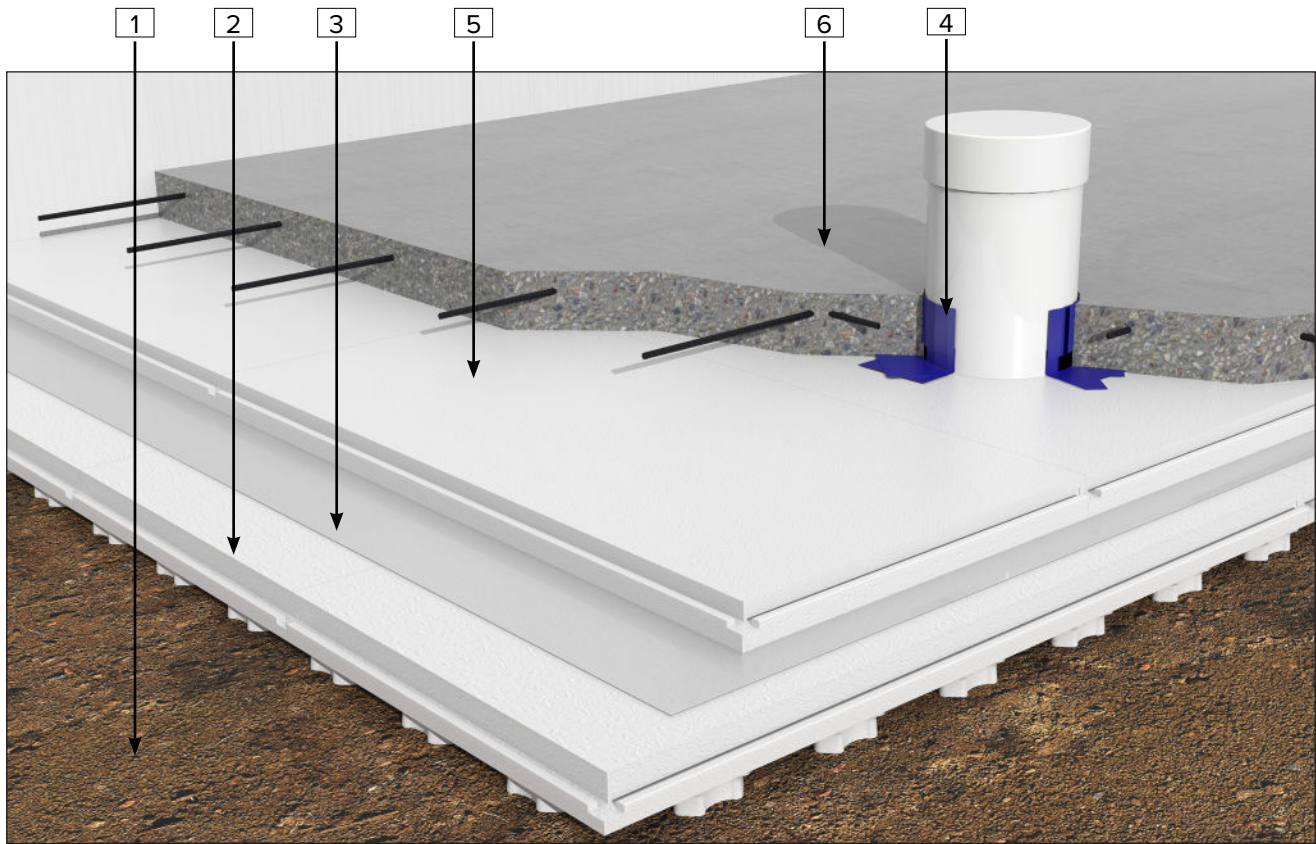
5 Install Heat-Sheet HD Series insulation panels on top of the soil gas barrier membrane. Perimeter sealing of Heat-Sheet HD Series panels is not required.

6 Pour the slab. Prior to concrete placement, inspect the condition of the Heat-Sheet HD Series panels, and repair or replace damages sections.

RESIDENTIAL



4.1.8 PENETRATION SEALING WITH SOIL GAS BARRIER MEMBRANE & HEAT-SHEET® HD SERIES



- 1 Level and compact the base material, as required. Heat-Sheet Heavy can be installed directly on undisturbed soil, compacted fill or sand.
- 2 Install Heat-Sheet Heavy on the base material. Heat-Sheet Heavy acts as the sub-slab ventilation layer, so no additional gas permeable layer, such as granular fill, is required.

Cut a circular hole with a hole saw or utility knife to accommodate the radon exhaust pipe.

Apply spray foam between Heat-Sheet Heavy and the exhaust pipe for gaps 1/4" or greater.
- 3 Install a soil gas barrier layer on top of Heat-Sheet Heavy, such as 6 mil polyethylene sheets or a peel-and-stick membrane. The soil gas barrier membrane will act as the gas impermeable layer, so it should cover the entire slab area and extend up against the foundation wall just below the depth of slab.

Prior to placing a soil gas barrier membrane, inspect the condition of the Heat-Sheet Heavy panels, and repair or replace damages panels.

- Provide a minimum 12" lap joint, or as required by local codes or by design. When using 6 mil polyethylene sheets, seal and secure lap joints with low permeance sheathing tape.
- 4 Apply low permeance sheathing tape, or a mastic sealant, to seal between the soil gas barrier layer and exhaust pipe.
- 5 Install Heat-Sheet HD Series insulation panels on top of the soil gas barrier membrane. Sealing penetrations around Heat-Sheet HD Series panels are not required.
- 6 Pour the slab. Prior to concrete placement, inspect the condition of the Heat-Sheet HD Series panels including all sealed joints and penetrations, and repair or replace damages sections.

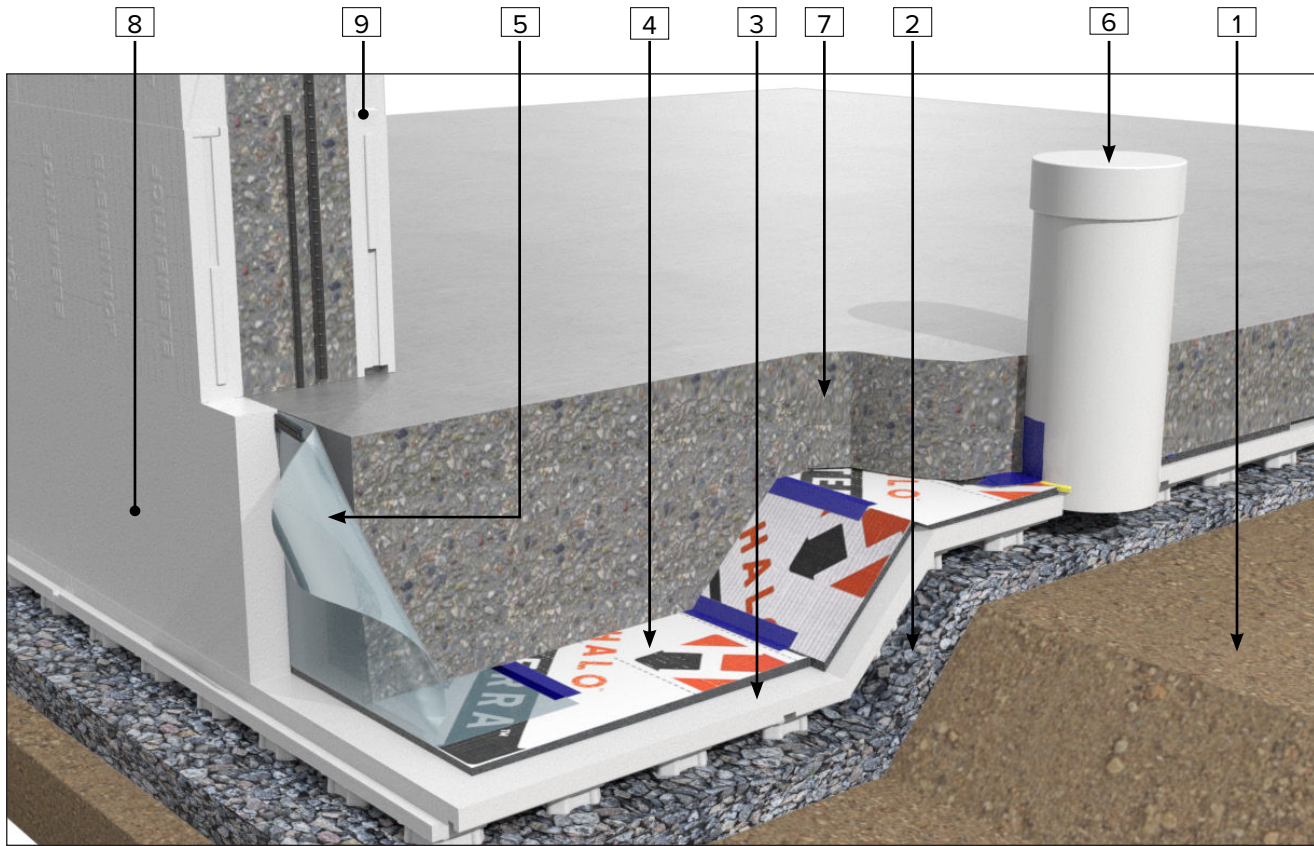
RESIDENTIAL



4.2 COMMERCIAL



4.2.1 PENETRATION SEALING WITH SUBTERRA® PROTECTION BOARD



- 1 Level and compact the base material, as required. Heat-Sheet® Heavy can be installed directly on undisturbed soil, compacted fill or sand.
- 2 Optionally, install crushed gravel over the base material to ensure a level grade.
- 3 Install Heat-Sheet Heavy on the crushed gravel layer. Heat-Sheet Heavy acts as the sub-slab ventilation layer for radon mitigation applications.
- 4 Install Subterra® Protection Board (minimum 1/2" thick) to provide the soil gas barrier. The soil gas barrier will act as the gas impermeable layer, so it should cover the entire slab area and extend up against the foundation wall just below the depth of slab.

Seal all joints and seams and penetrations with tape or flexible caulking.

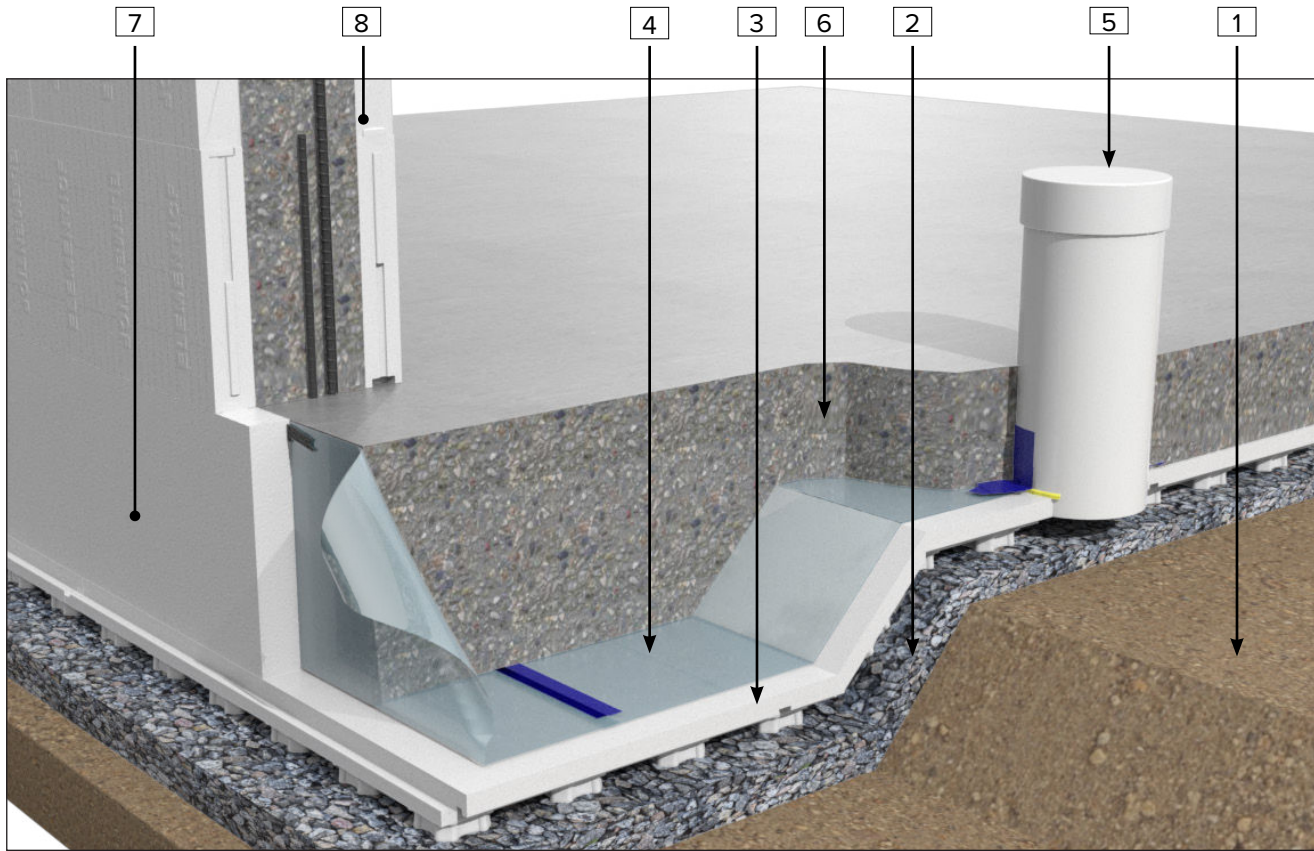
Prior to placement of Subterra Protection Board, inspect the condition of the Heat-Sheet Heavy panels, and repair or replace damaged sections.
- 5 Install soil gas barrier membrane (minimum 10 mil. polyethylene) and seal to Subterra Protection Board and perimeter foam just below the depth of the slab. Provide a minimum 12 inch (305 mm) lap joint with Subterra Protection Board.
- 6 Cut a circular hole with a hole saw or utility knife to accommodate the radon exhaust pipe.

Seal pipe penetration with tape or flexible caulking.
- 7 Pour the slab (reinforcement not shown for clarity). Prior to concrete placement, inspect the condition of the Subterra Protection Board panels including all sealed joints and penetrations, and repair or replace damaged sections.
- 8 Install perimeter foam around slab. Exposed foam must be coated for protection.
- 9 Install Element ICF. Provide footing dowels, as specified.

COMMERCIAL



4.2.2 PENETRATION SEALING WITH SOIL GAS BARRIER MEMBRANE



- 1 Level and compact the base material, as required. Heat-Sheet® Heavy can be installed directly on undisturbed soil, compacted fill or sand.
- 2 Optionally, install crushed gravel over the base material to ensure a level grade.
- 3 Install Heat-Sheet Heavy on the crushed gravel layer. Heat-Sheet Heavy acts as the sub-slab ventilation layer for radon mitigation applications.
- 4 Install a soil gas barrier layer on top of Heat-Sheet Heavy (minimum 10 mil polyethylene membrane). The soil gas barrier will act as the gas impermeable layer, so it should cover the entire slab area and extend up against the foundation wall just below the depth of slab.
- 5 Cut a circular hole with a hole saw or utility knife to accommodate the radon exhaust pipe. Seal pipe penetration with tape or flexible caulking.
- 6 Pour the slab (reinforcement not shown for clarity). Prior to concrete placement, inspect the condition of the soil gas barrier including all sealed joints and penetrations, and repair or replace damaged sections.
- 7 Install perimeter foam around slab. Exposed foam must be coated for protection.
- 8 Install Element ICF. Provide footing dowels, as specified.

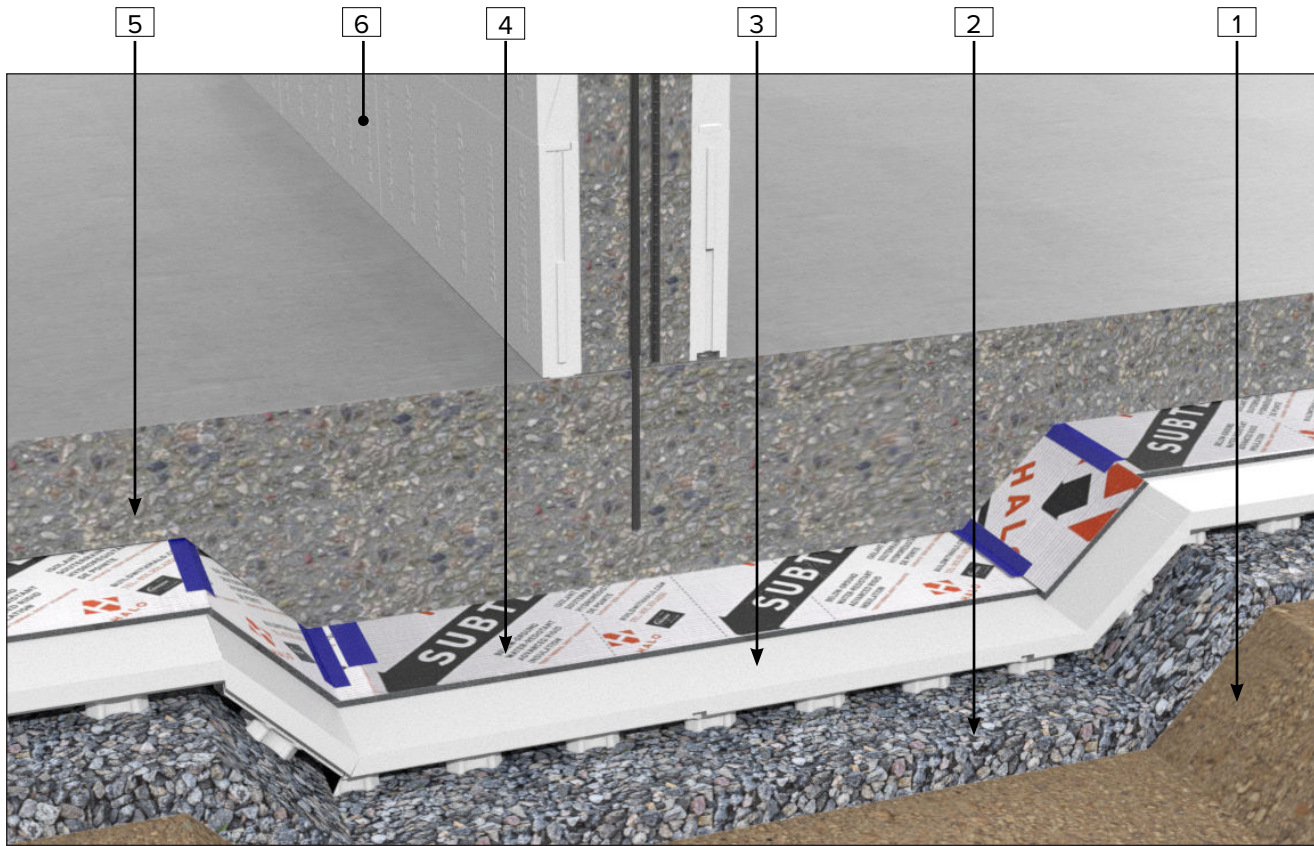
Prior to placing a soil gas barrier membrane, inspect the condition of the Heat-Sheet Heavy panels, and repair or replace damaged panels.

Provide a minimum 12” lap joint, or as required by local codes or by design. When using polyethylene membranes, seal and secure lap joints with low permeance sheathing tape.

COMMERCIAL



4.2.3 SEALING WITH SUBTERRA® PROTECTION BOARD AT INTERIOR THICKENED SLAB



- 1 Level and compact the base material, as required. Heat-Sheet® Heavy can be installed directly on undisturbed soil, compacted fill or sand.
- 2 Optionally, install crushed gravel over the base material to ensure a level grade.
- 3 Install Heat-Sheet Heavy on the crushed gravel layer. Heat-Sheet Heavy acts as the sub-slab ventilation layer for radon mitigation applications.
- 4 Install Subterra® Protection Board (minimum 1/2" thick) to provide the soil gas barrier. The soil gas barrier will act as the gas impermeable layer, so it should cover the entire slab area and extend up against the foundation wall just below the depth of slab.
- 5 Pour the slab (reinforcement not shown for clarity). Prior to concrete placement, inspect the condition of the soil gas barrier including all sealed joints and penetrations, and repair or replace damaged sections.
- 6 Install Element ICF. Provide footing dowels, as specified.

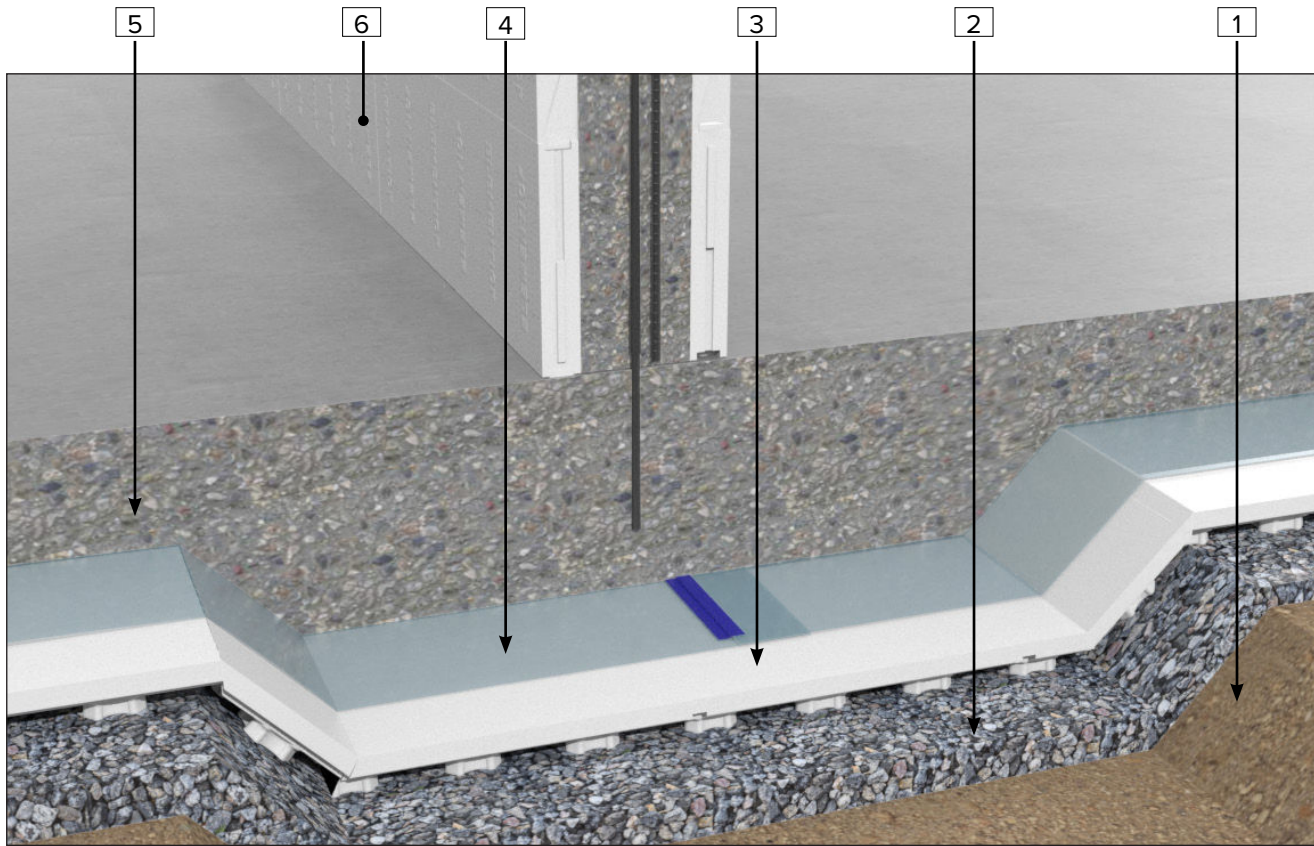
Seal all joints and seams and penetrations with tape or flexible caulking.

Prior to placement of Subterra Protection Board, inspect the condition of the Heat-Sheet Heavy panels, and repair or replace damaged sections.

COMMERCIAL



4.2.4 SEALING WITH SOIL GAS BARRIER MEMBRANE AT INTERIOR THICKENED SLAB



- 1 Level and compact the base material, as required. Heat-Sheet® Heavy can be installed directly on undisturbed soil, compacted fill or sand.
- 2 Optionally, install crushed gravel over the base material to ensure a level grade.
- 3 Install Heat-Sheet Heavy on the crushed gravel layer. Heat-Sheet Heavy acts as the sub-slab ventilation layer for radon mitigation applications.
- 4 Install a soil gas barrier layer on top of Heat-Sheet Heavy (minimum 10 mil polyethylene membrane). The soil gas barrier will act as the gas impermeable layer, so it should cover the entire slab area and extend up against the foundation wall just below the depth of slab.
- 5 Pour the slab (reinforcement not shown for clarity). Prior to concrete placement, inspect the condition of the soil gas barrier including all sealed joints and penetrations, and repair or replace damaged sections.
- 6 Install Element ICF. Provide footing dowels, as specified.

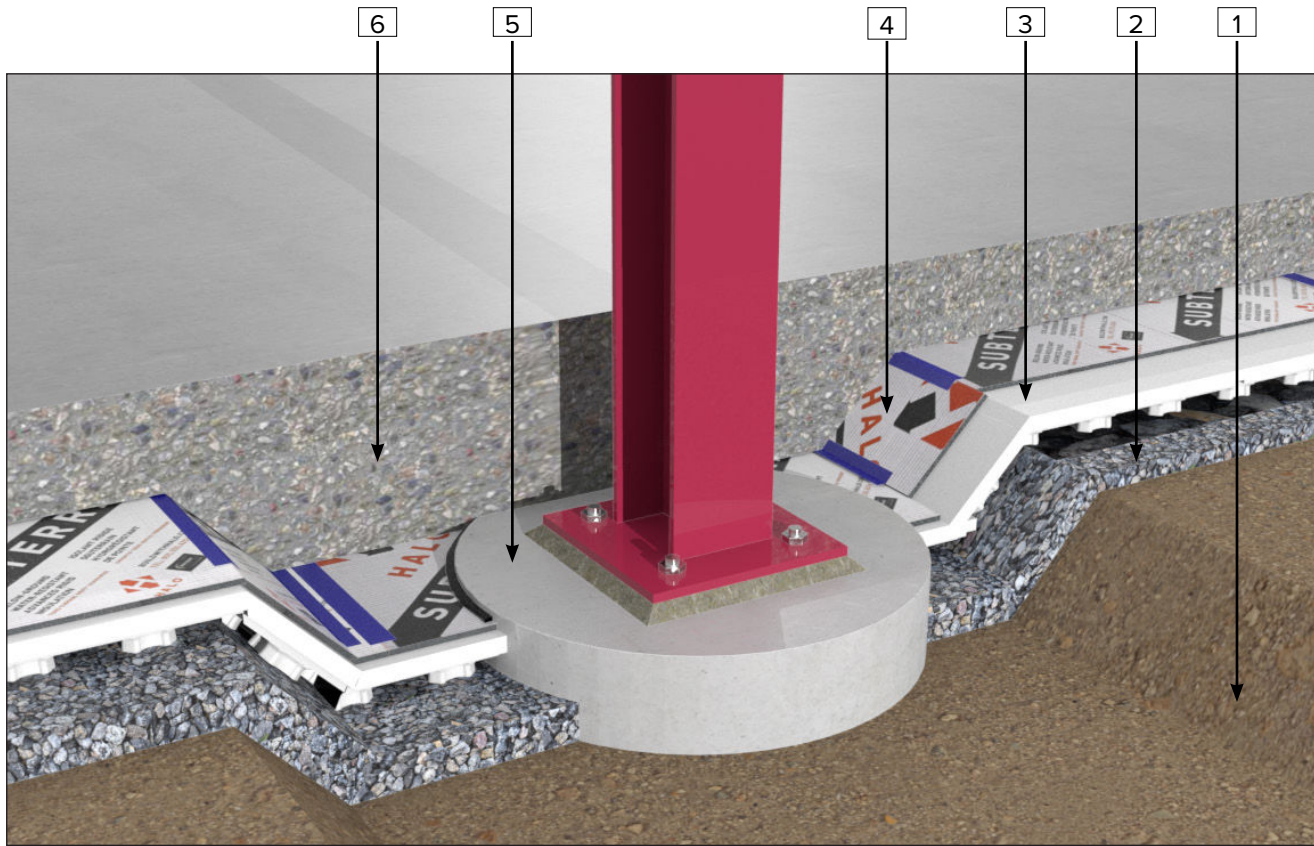
Prior to placing a soil gas barrier membrane, inspect the condition of the Heat-Sheet Heavy panels, and repair or replace damaged panels.

Provide a minimum 12” lap joint, or as required by local codes or by design. When using polyethylene membranes, seal and secure lap joints with low permeance sheathing tape.

COMMERCIAL



4.2.5 SEALING WITH SUBTERRA® PROTECTION BOARD AT PILE LOCATION



- 1 Level and compact the base material, as required. Heat-Sheet® Heavy can be installed directly on undisturbed soil, compacted fill or sand.
- 2 Optionally, install crushed gravel over the base material to ensure a level grade.
- 3 Install Heat-Sheet Heavy on the crushed gravel layer. Heat-Sheet Heavy acts as the sub-slab ventilation layer for radon mitigation applications.
- 4 Install Subterra® Protection Board (minimum 1/2" thick) to provide the soil gas barrier. The soil gas barrier will act as the gas impermeable layer, so it should cover the entire slab area and extend up against the foundation wall just below the depth of slab.
- 5 Cut Heat-sheet Heavy and Subterra Protection Board to fit around pile locations with a hole saw or utility knife. Seal with tape or flexible caulking.
- 6 Pour the slab (reinforcement not shown for clarity). Prior to concrete placement, inspect the condition of the soil gas barrier including all sealed joints and penetrations, and repair or replace damaged sections.

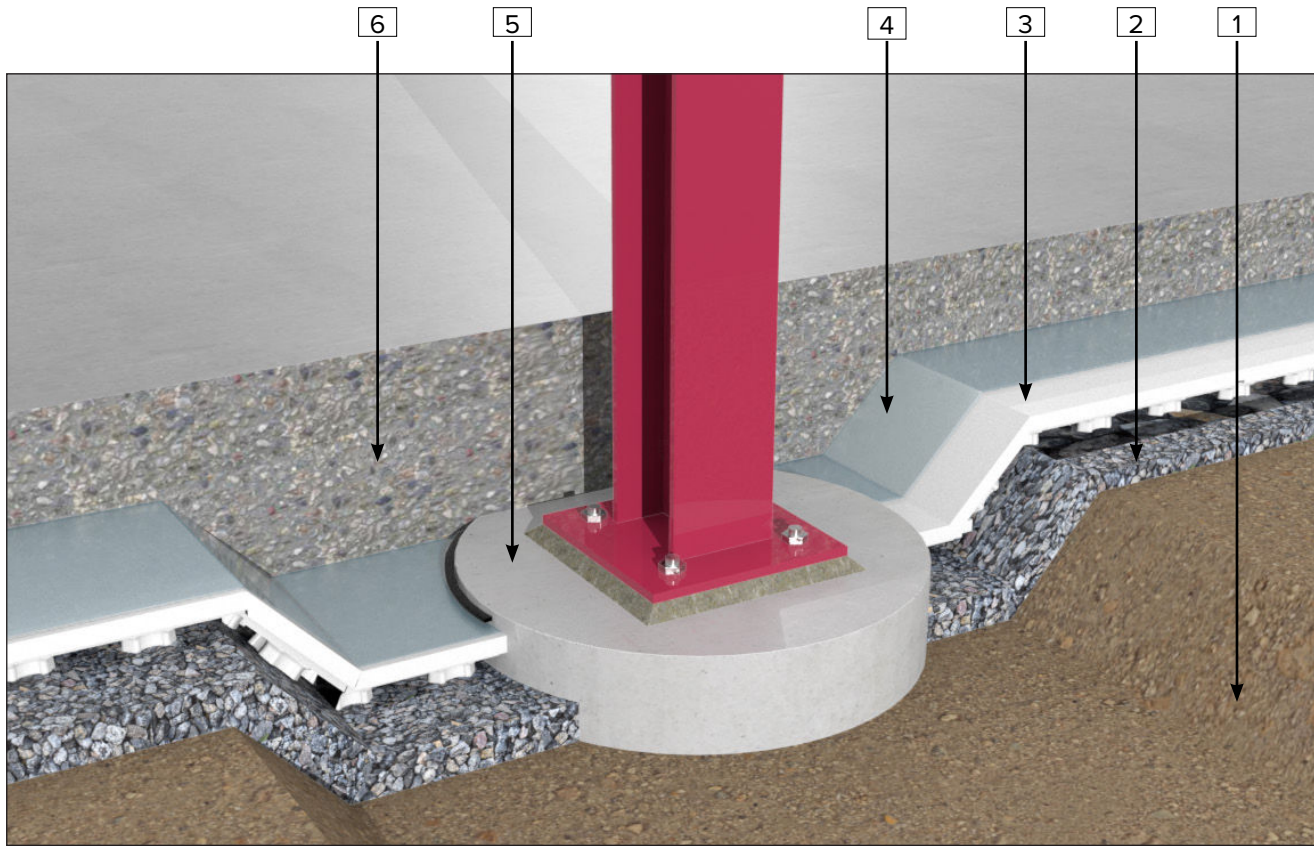
Seal all joints and seams and penetrations with tape or flexible caulking.

Prior to placement of Subterra Protection Board, inspect the condition of the Heat-Sheet Heavy panels, and repair or replace damaged sections.

COMMERCIAL



4.2.6 SEALING WITH SOIL GAS MEMBRANE AT PILE LOCATION



- 1 Level and compact the base material, as required. Heat-Sheet® Heavy can be installed directly on undisturbed soil, compacted fill or sand.
- 2 Optionally, install crushed gravel over the base material to ensure a level grade.
- 3 Install Heat-Sheet Heavy on the crushed gravel layer. Heat-Sheet Heavy acts as the sub-slab ventilation layer for radon mitigation applications.
- 4 Install a soil gas barrier layer on top of Heat-Sheet Heavy (minimum 10 mil polyethylene membrane). The soil gas barrier will act as the gas impermeable layer, so it should cover the entire slab area and extend up against the foundation wall just below the depth of slab.
- 5 Cut Heat-sheet Heavy and soil gas membrane to fit around pile locations with a hole saw or utility knife. Seal with tape or flexible caulking.
- 6 Pour the slab (reinforcement not shown for clarity). Prior to concrete placement, inspect the condition of the soil gas barrier including all sealed joints and penetrations, and repair or replace damaged sections.

Prior to placing a soil gas barrier membrane, inspect the condition of the Heat-Sheet Heavy panels, and repair or replace damaged panels.

Provide a minimum 12” lap joint, or as required by local codes or by design. When using polyethylene membranes, seal and secure lap joints with low permeance sheathing tape.

COMMERCIAL



Connect with a Local Manufacturer

888.838.5038

330 Cain Drive
Haysville, KS 67060-2004

888.453.5961

11581-272 St.
Acheson, AB T7X 6E9

888.706.7709

840 Division St.
Cobourg, ON K9A 5V2

888.453.5961

6333 Unsworth Rd.
Chilliwack, BC V2R 5M3

877.789.7622

35 Headingley Rd.
Headingley, MB R4H 0A8



info@LogixBrands.com
Heat-Sheet.com

